

OMNIVIEW ZBx GANTRY

MULTI-TECHNOLOGY, MULTI-VIEW, HIGH-ENERGY CARGO AND VEHICLE INSPECTION SYSTEM

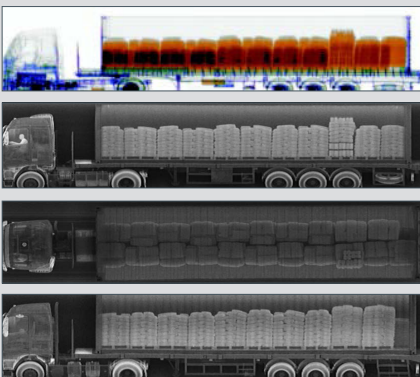
KEY FEATURES AND BENEFITS

- Combination dual-energy and Z Backscatter technologies for thorough inspection
- Unique design for best-in-class imaging technology
- Four-color material discrimination



The OmniView® ZBx Gantry system provides unparalleled detection capability by combining best-in-class dual-energy transmission and Z Backscatter® imaging.

Like no other scanning solution on the market, the OmniView ZBx Gantry provides multi-view and multi-technology imaging of trucks, cargo containers, and tankers. The OmniView ZBx Gantry system features powerful 6 MeV transmission imaging that generates a high-resolution, colorized image, enabling analysts to visually differentiate classes of materials. Simultaneously, the system captures photo-like Z Backscatter images in three additional views for left-, right-, and top-side imaging of cargo. The combination of technologies makes the system the most reliable means of detecting contraband and threatening materials, such as weapons, drugs, and explosives hidden in cargo containers, tankers, and large vehicles.



TOP: High-energy X-rays penetrate dense cargo

BOTTOM : Photo-like images from three sides

SPECIFICATIONS

OMNIVIEW ZBx GANTRY

PERFORMANCE

- **High-Energy Mode Penetration:** 400 mm of steel at 0.2 m/s
- **Dual-Energy Mode Penetration:** 380 mm of steel at 0.2 m/s
- **Wire Resolution:** 0.8 mm wire in air

OPERATING FEATURES

- **X-ray Source:** 6 MeV
- **Crew:** Scan coordinator and image analyst
- **Scan Speeds:** 0.2, 0.3, 0.4 m/s (8, 12, 16 in/s)
- **Throughput:**
 - **Single-Truck Scanning:** 16 trucks per hour
 - **Dual-Truck Scanning:** 24 trucks per hour
- **Power Requirements:**
 - **50 Hz:** 400 VAC, 105 kVA

SYSTEM DIMENSIONS AND SPECIFICATIONS

- **Width:** 11.1 m (36 ft 4 in)
- **Height:** 7.7 m (25 ft 2 in)
- **Length:** 9 m (29 ft 4 in)

Tunnel Dimensions

- **Width:** 3.6 m (11 ft 10 in)
- **Height:** 5.1 m (16 ft 9 in)
- **Length Options:**
 - **Single-Truck Scanning:** 38.1 m (125 ft) minimum rail length
 - **Dual-Truck Scanning:** 56.4 m (185 ft) minimum rail length

Maximum Vehicle Dimensions

- **Width (between rub rails):** 3 m (9 ft 10 in)
- **Height:** 5 m (16.5 ft)
- **Length:** See Tunnel Length Options above

ENVIRONMENT

- **Operating Temperature:** -18 °C to 55 °C (0 °F to 131 °F)
- **Enclosed Facility:** System is designed to be deployed in an enclosed facility to reduce the size of the radiation controlled zone and for other environmental conditions

HEALTH AND SAFETY

- **Shielded Radiation Exclusion Zone (10 scans per hour):**
 - **31.8 m Rails:** 58.9 m x 15.9 m (193 ft 3 in x 52 ft 2 in)
 - **56.4 m Rails:** 77.2 m x 15.9 m (253 ft 2 in x 52 ft 3 in)
- **Radiation Dose at Exclusion Zone Boundary:** 0.5 µSv in any one hour
- **Radiation Dose to Crew:** < 0.5 µSv in any one hour
- **Radiation Dose to Cargo:** Less than 80 µSv/scan (8 mR)

The performance characteristics and photos in this document are indicative and for information only and specifications may vary depending on scan speeds, options and other factors; the specific characteristics of individual systems may differ based upon customer requirements, operation, and supplied options. In addition, due to continual development of Rapiscan Systems and AS&E products, we reserve the right to amend specifications without notice. Please note that due to U.S. laws and regulations, not all products are available for sale in all countries without restriction. Please contact your Rapiscan | AS&E Cargo Scanning & Solutions sales representative for more information or to discuss additional requirements.

© 2019 Rapiscan Systems | American Science and Engineering, Inc.

Rapiscan | AS&E — Part of the OSI Systems family of security companies. We deliver products and services that help our customers find threats and contraband with ease and confidence, while maximizing operational efficiency. Our global service network enables us to respond to customer needs quickly and provide exceptional support, because we know that every moment of uptime is critical. We understand the importance of our customers' missions—from uncovering trade fraud, to combating terrorism, to detecting drug and weapons smuggling, to exposing illegal immigration. That's why it's our mission to help them succeed.

US Operations
829 Middlesex Turnpike
Billerica, MA 01821

UK Operations
Prospect Way
Victoria Business Park
Biddulph, Stoke-on-Trent ST8 7PL

Contact
Tel: +1.978.262.8700
Fax: +1.978.262.0533
rapiscan-ase.com

SYSTEM OPTIONS

- **Integrated Peripheral Devices:** License/number plate recognition system, container code recognition system, under-vehicle inspection system, and manifest scanner
- **Radiation Portal Monitor:** Gamma ray only or gamma/neutron detection
- **CIM Server Networking Solution:** Enables images from one or more systems to be sent to a centralized database and connects one or more analyst workstations for local or remote image analysis

Operator Alert Tools

- **Transmission Operator Alert Software:** Identifies high-density anomalies

Rapiscan
systems

AS&E